



Open Evening 19th September 2023

Welcome

Open Evening 2023



A Catholic High School



Our mission as a Catholic School



**“I am the vine,
you are the branches.
Whoever remains in me,
with me in them,
bears fruit in plenty.”**

John 15:5

Faith

Love

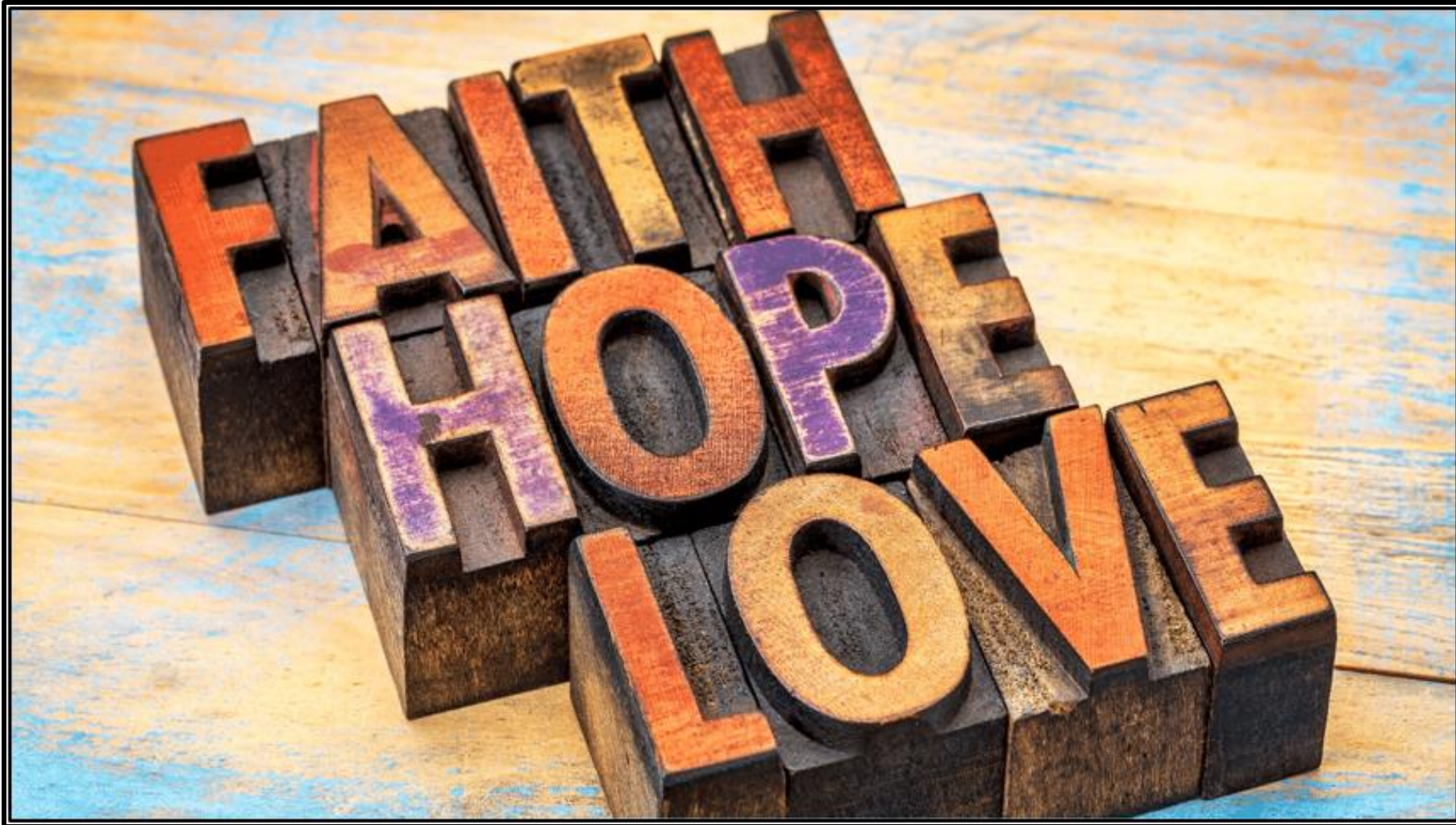
Hope

Vision



"To provide a transformative Catholic Education ensuring that our pupils are empowered to serve the common good, by living the values of Faith, Hope and Love"

A living set of values





Why St Bede's?

- Catholic Education
- High standards
- Excellent Examination results
- Superb extra-curricular programme
- Experienced and Supportive Staff
- Caring, Christian Ethos
- Highly Regarded and popular school



What do we want for your child?

- **Happy**
- **Fulfilled**
- **Successful**
- **Treated and developed as an individual**
- **A rounded, whole person fully prepared for the next stage of life**
- **Further developed in Christian and moral values**

A word from our Senior Students





2023 Examination Data

Progress 8 and
Attainment 8
data
significantly
above National
average

15% of our
pupils achieved
a grade 9-7 in
English and
Mathematics

62% of our
pupils achieved
a grade 9-5 in
English and
Mathematics

85% of our
pupils achieved
a grade 9-4 in
English and
Mathematics



2023 Examination Data

23% of our pupils achieved a grade 9-7 in English

80% of our pupils achieved a grade 9-5 in English

92% of our pupils achieved a grade 9-4 in English



2023 Examination Data

28% of our pupils achieved a grade 9-7 in Mathematics

66% of our pupils achieved a grade 9-5 in Mathematics

88% of our pupils achieved a grade 9-4 in Mathematics



2023 Examination Data

15 out of 19 GCSE option subjects achieved significantly above national average data for GCSE grades 9-4.

10 of these subjects performed significantly above national average data for GCSE grades 9-7, including English, Mathematics and many other subject areas.



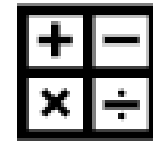
Broad and balanced curriculum

- 13 possible subjects at KS3
- Bespoke support
- Specialist intervention teachers
- Broad KS4 offer
- Real options process
- Wide range of futures
- A pathway for everyone

Our GRITTY Curriculum



Growth Mindset



Tenacity



Resilience



Transformational



Independence



Your World



A word from our Year
7 pupils



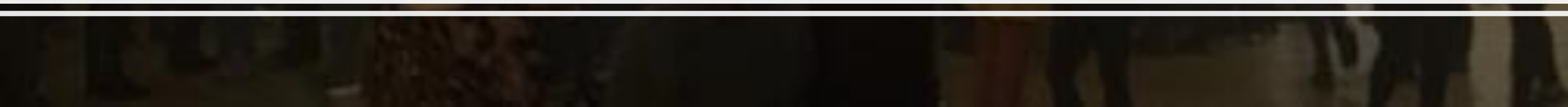
Sports Clubs



Music



Bede Fest





ROAR Programme





Robinwood





Summer Fair



Celebration Trips

Other trips and activities



- Exchange trips
- Public Speaking competitions
- Ski trips
- Lunchtime clubs and activities



And much more...

Headteacher
newsletter

Admissions



- Any child of any background and from any primary school can apply to St Bede's
- The admission criteria and the supplementary faith form are available on the school website or from reception
- **'Other than Catholic'** pupils are fully integrated in school life and gain substantially from the caring ethos of St Bede's

Catholic



- Baptised Catholic means, within the policies and practices relating to school admissions;

"any child who, before the due date of application, is a baptised Catholic or who, having been baptised into another Christian denomination whose baptisms are recognised by the Catholic Church, has subsequently been formally received into the Catholic Church."

An aerial photograph of a residential neighborhood featuring numerous brick houses with tiled roofs. The houses are arranged in a dense pattern, with some featuring white garage doors and bay windows. The roofs are primarily brown and grey. The houses are set on a slight incline, with some greenery and trees visible between the buildings. A white text box is overlaid on the right side of the image, containing the title 'Oversubscription' and a bullet point explaining the school admission process.

Oversubscription

- **Where there are more applicants for the available places within a category, then the distance between the Ordnance Survey address points for the school and the home measured in a straight line will be used as the final determining factor, nearer addresses having priority over more distant ones.**

Application Dates



- Parents have to apply online via their local authority by **31st October 2023**
- You must also complete our **supplementary faith form** and provide **proof of baptism** to us at school by this date.
- You will receive a receipt if you hand deliver the forms and we strongly recommend that if you post them that you send them by registered post. You will receive a receipt at the post office, and we can trace who has signed for them at school.



Application Resources

www.sbchs.co.uk

Open Evening 2023

